



- Bitmac road surface
- Permeable concrete joint rock/dredging to parking bays, herringbone pattern, colour anthracite
- Permeable concrete joint rock/dredging to trolley bays and pedestrian routes, strecher pattern, colour anthracite
- Concrete paving to footpaths
- Concrete cast finish
- Soft landscaping

Stockton - Yarm Road	
Site Area	11041m <sup>2</sup>
Ground Floor GIA	2268m <sup>2</sup>
First Floor GIA	200m <sup>2</sup>
Total GIA	2468m <sup>2</sup>
Total GEA	2574m <sup>2</sup>
Sales Area	1424m <sup>2</sup>
Warehouse Area	613m <sup>2</sup>
Ancillary Area GF	231m <sup>2</sup>
Ancillary Area FF	200m <sup>2</sup>
Aisles	5
Car Parking Spaces	146
Trolley Bays	2

Scale

Project **Yarm Road, Stockton**

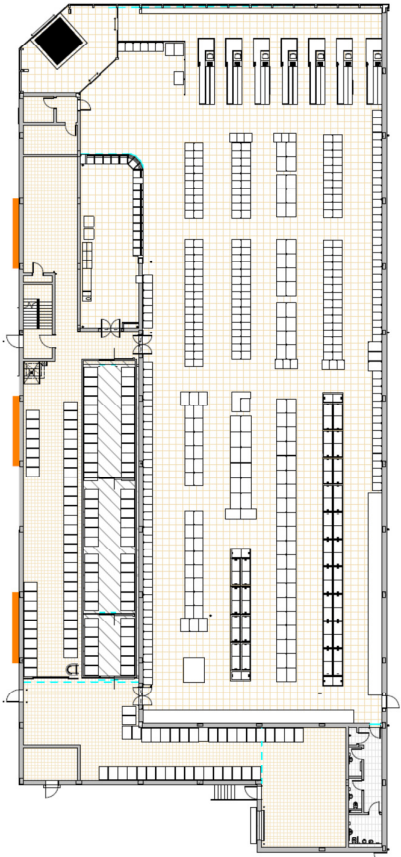
Drawing **Proposed Site Layout**

Project No **06913** DWG No **A/90/GAP003** Rev **18**

Scale at A3 **1:500** Drawn **PAC** Checked **KH**

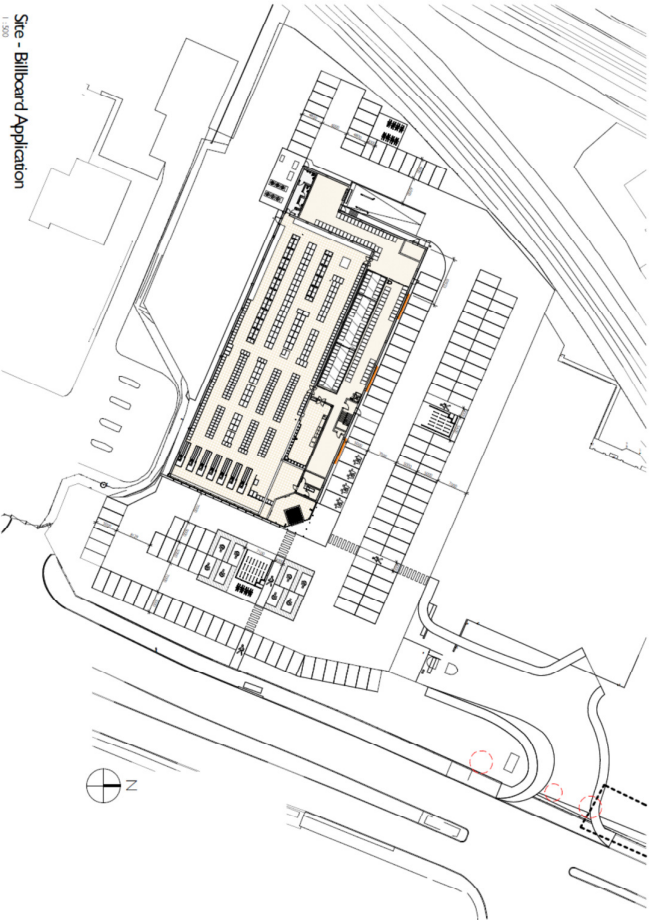




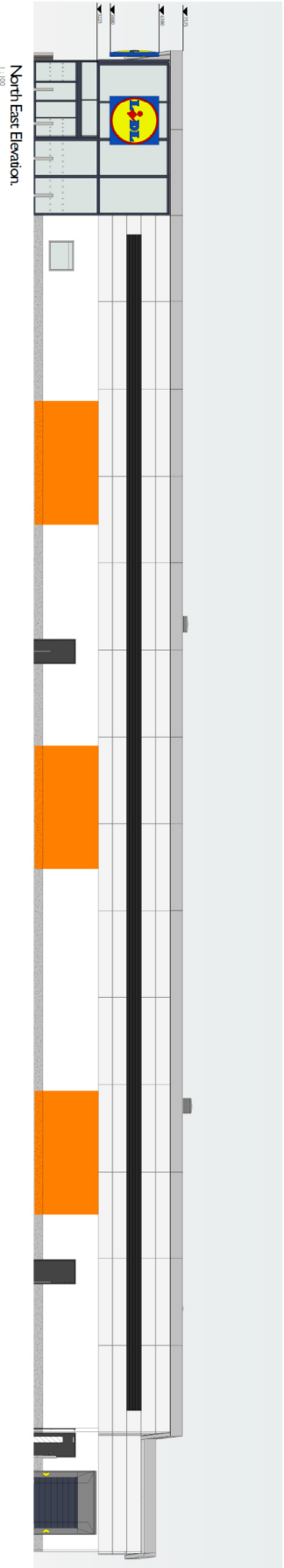


Ground Floor Plan  
1:200

**Billboard Key**  
 Billboards  
 Billboards (to be removed)

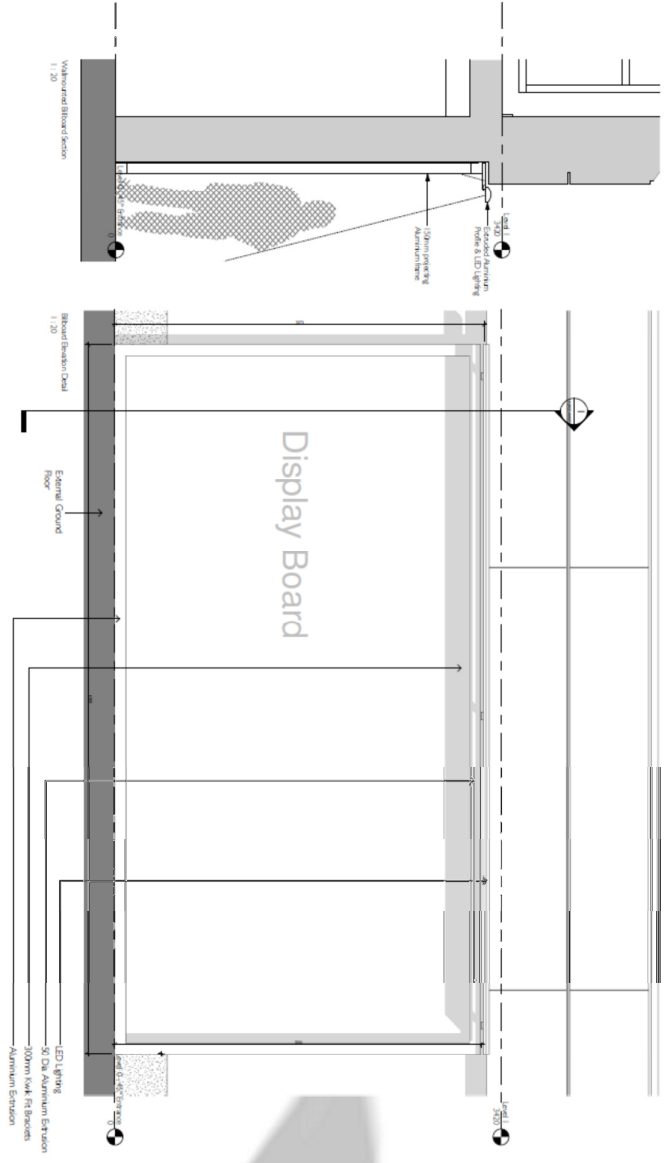


Site - Billboard Application  
1:500



North East Elevation  
1:100





**Note: Fitings**  
 Allow all fittings to pass through the Precast Bricks and use the correct bedding compound. Fittings including bolts, nuts, washers, and spacers should be secured with non-removable, tamper not be used under any circumstances.

**Planning**



Lidl UK GmbH

Typical Wall Mounted Beerboard Detail

FIG	406	1/12	(M3) 1:20	200	200	200	200
SP-061558	A100/GAN016		T1				